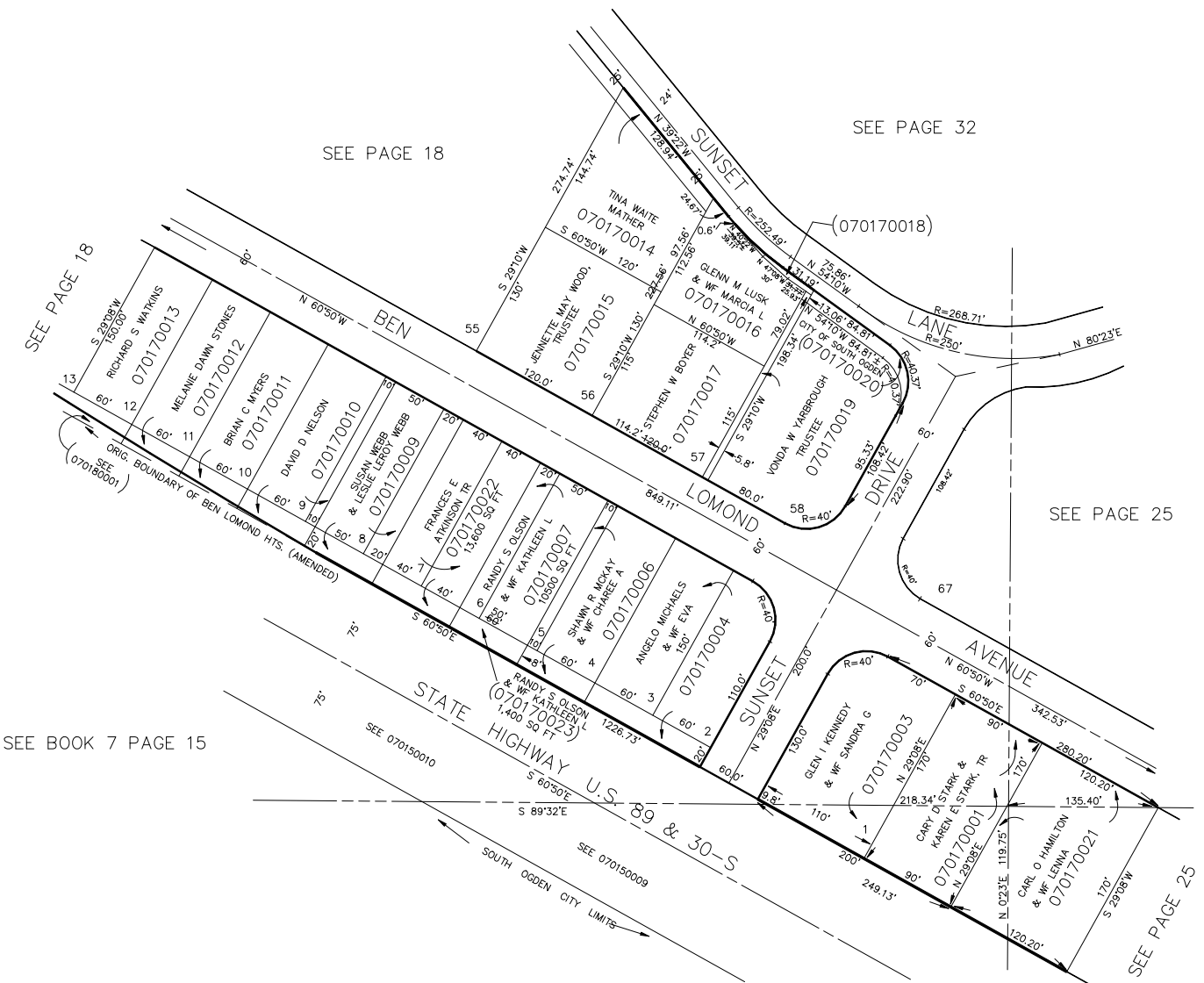


AMENDED PLAT OF
BEN LOMOND HEIGHTS
LOTS 1 TO 12 & 56 TO 58
IN SOUTH OGDEN CITY
SCALE 1" = 80'

TAXING UNIT: 27



SEE PAGE 18

SEE PAGE 32

SEE PAGE 18

SEE PAGE 25

SEE BOOK 7 PAGE 15

SEE PAGE 25

FOR COMPLETE ENG DATA SEE
ORIGINAL DEDICATION PLAT IN
BOOK 9, PAGE 49 OF RECORDS.